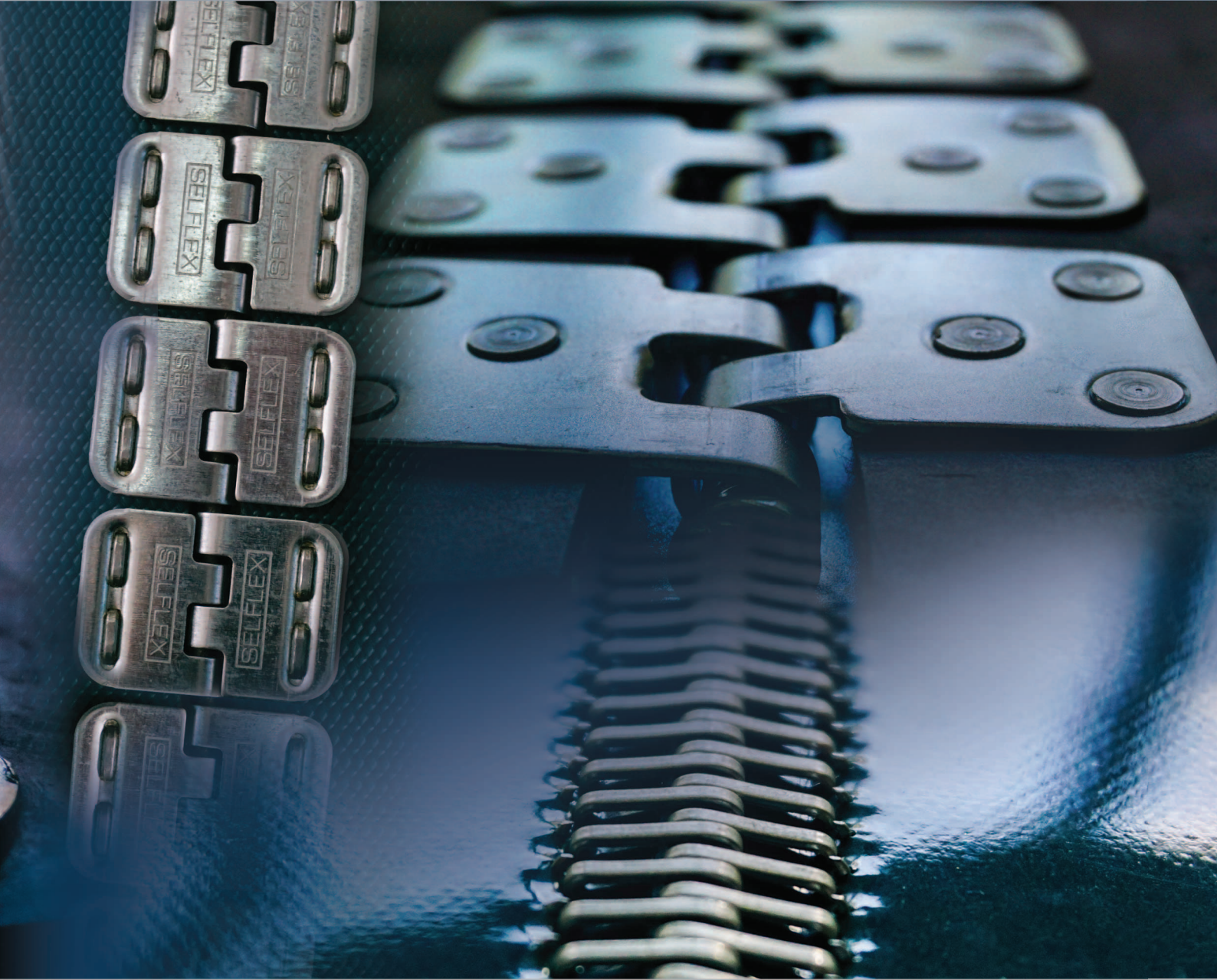


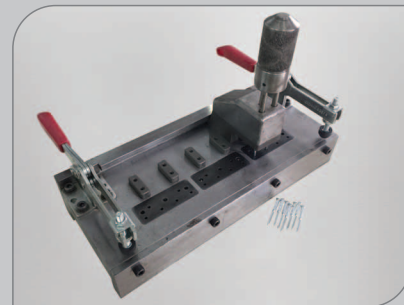
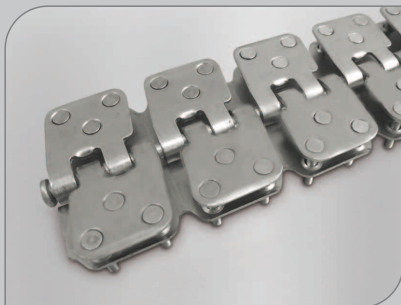


SELFLEX®
Conveyor Belt Fasteners

KIVILCIM®
Konveyör Bant Raptiyeleri



HINGED FASTENERS



Ideal for rubber plied and PVC solid woven belting, the Selfflex Rivet Hinged Fasteners delivers the performance, long life, and easy installation that maximize belt availability.

Features and Benefits:

- Self-setting rivets in staggered pattern for maximum holding ability without damage to belt carcass fibers.
- Built-in viewport for easy fastener positioning.
- Easy joint separation by simply removing the hinge pin.
- Easy installation with our patented design bolt or with nail-rivet.
- Suitable for working on small diameter rolls.

Installation Options:

- To make installation with bolts you will need only MA08-T installation wrench.
- To make installation with nail-rivets you can use MA08-40 installation tool for easy installation.

Options:

- 50cm, 60cm, 65cm, 80cm, 100cm, 120cm are the available sizes.

Packaging:

- Depending on your preference, fasteners can be shipped together with nail rivets or bolts&nuts inside carton boxes as 5 sets/box. Connecting pins are included in the boxes.

Applications:

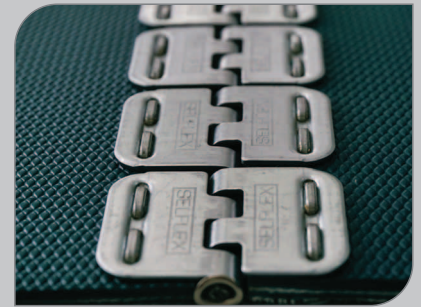
- Underground and surface mining, coal and hard rock, cement and asphalt plants, pulp and paper, sand and gravel plants, and other demanding applications.
- For belts from 8 – 10 mm (5/16" – 25/64") thick with mechanical fastener ratings up to 80 kN/m and minimum pulley diameters up to 300 mm.

HINGED FASTENER SELECTION CHART

Fastener Code	Tension Range	Suitable Belt Thickness		Min. Pulley Diameter		Connecting Pin Diameter	
	kN/m	mm	inch	mm	inch	mm	inch
MR05	80	8.0-10.0	5/16"-25/64"	300	11.8"	8.0	5/16"

You can watch the installation video of this fastener from www.selflex.com

HINGED and STAPLED FASTENERS



With pre-inserted staples and a one-piece strip design, Selfflex Hinged and Stapled Fasteners makes splicing quick and easy.

Features and Benefits:

- Strong and impact-resistant splice.
- Abrasion resistant splice.
- The front edge of the fastener is beveled to allow it to interface smoothly with conveyor components.

Installation Options:

- The installation of MR01 and MR02 can be done with the installation tools MA02-10, MA02-20, MA02-40, MA02-100.
- The installation of MR03 can be done with the installation tool MA03-15.

Options:

- Available in sizes 60cm, 80cm, 100cm. Can be manufactured in special sizes as per order.
- Available in steel, stainless steel 316Q.

Packaging:

- Fasteners are shipped inside carton boxes as 5 sets/box. Connecting pins are included in the boxes.

Applications:

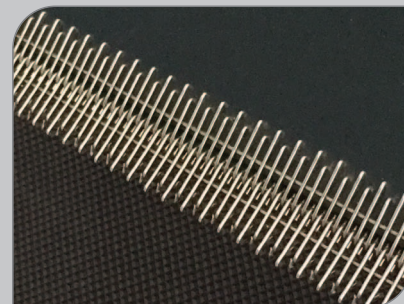
- Package and baggage handling, cased goods, parts, food and agricultural products.
- Belts from 1,5 - 6,5 mm (1/16" - 1/4") thick, with mechanical fastener ratings up to 40 kN/m and minimum pulley diameters 50 mm.

HINGED AND STAPLED FASTENER SELECTION CHART

Fastener Code	Tension Range	Suitable Belt Thickness		Min. Pulley Diameter		Connecting Pin Diameter	
	kN/m	mm	inch	mm	inch	mm	inch
MR01	17	1.5-3.2	1/16"-1/8"	50	2"	2.4	0.080"
MR02	28	3.2-5.5	1/8"-7/32"	70	3"	3.4	0.141"
MR03	40	4.5-6.5	3/16"-1/4"	100	4"	3.6	1.600"

You can watch the installation video of this fastener from www.selflex.com

WIRE HOOKS



Features and Benefits:

- Stainless steel material.
- Quick, economical installation.
- Low-profile fastener.
- Double-staggered-grip pattern that doesn't degrade the integrity of the belt carcass.
- Operates quietly and interfaces seamlessly with conveyor components.

Installation Options:

- MA01-75 Roller Lacer–Lightweight, portable installation tools which gently and precisely roll the hooks into the belt for a low-profile splice. The length of the tool is 75cms.
- MA04-20 Vise Lacer – Works with a vise. Length of the tool is 20cms.

Options:

- Wide variety of wire diameters, leg and point lengths.

Packaging:

- Fasteners are shipped inside carton boxes as 5 sets/box. Connecting pins are included in the boxes.

Applications:

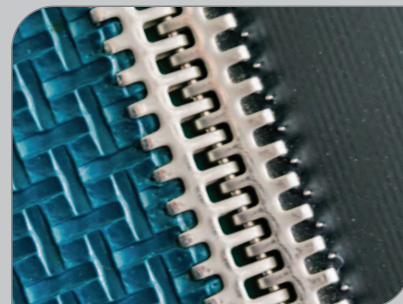
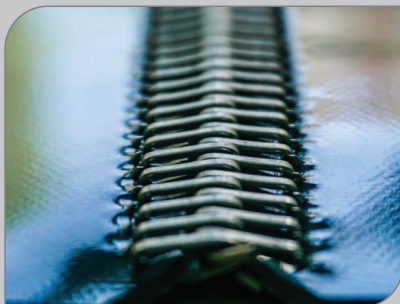
- Depending on their size wire hooks can be used with laundry belts, ligh-duty PVC belts, filter cloth, filter belts, heavy-duty PVC belts, rubber conveyor belts, heavy-duty conveyor belts.
- For belts up to 10 mm (25/64") thick and minimum pulley diameters 24mm.

WIRE HOOKS SELECTION CHART

Fastener Code	Material	Wire Diameter		Length	Suitable Belt Thickness		Applications
		mm	inch		mm	inch	
TR00x05	SS 316Q	0,6	0.025"	5cm	0.5 - 2.2	1/48"-3/32"	Laundry Belts
TR00x10	SS 316Q	0,6	0.025"	10cm	0.5 - 2.2	1/48"-3/32"	
TR01-Y	SS 304Q	1.0	0.040"	30cm	1.5 - 3.0	1/16" - 1/8"	PVC / Thin Belts / Food Industry
TR01-YU	SS 316Q	1.0	0.040"	30cm	1.5 - 3.0	1/16" - 1/8"	
TR01-DU	SS 316Q	0.8 x 1.0	0.032" x 0.040"	30cm	1.0 - 2.5	1/24"-3/32"	
TR02-Y	SS 304Q	1.4	0.054"	30cm	3.0 - 4.0	1/8" - 5/32"	Filter Cloth/Filter Belts
TR03-Y	SS 304Q	1.4	0.054"	30cm	4.0 - 5.5	5/32"-7/32"	Heavy Industry Belts / PVC
TR04-Y	SS 304Q	1.4	0.054"	30cm	5.0 - 6.5	1/5"-1/4"	Rubber Conveyor Belts
TR05-Y	SS 304Q	1.4	0.054"	30cm	6.0 - 8.0	15/64" - 5/16"	Heavy-Duty Belts/ Rubber Belts
TR06-Y	SS 304Q	1.4	0.054"	30cm	8.0 - 10.0	5/16" - 25/64"	

You can watch the installation video of this fastener from www.selflex.com

BELT LACING



For systems with pulleys as small as 1" (25 mm) diameter, Selfflex Lacing System offers an economical, low-profile splice.

Features and Benefits:

- One-piece design provide uniform tension across belt width.
- Engineered to prevent pieces from working loose from belt.

Installation Options:

- MA01-75 Roller Lacer–Lightweight, portable installation tools which gently and precisely roll the hooks into the belt for a low-profile splice. The length of the tool is 75cms.
- MA04-20 Vise Lacer – Works with a vise. Length of the tool is 20cms.
- SR series No:1 and No:7 fasteners can be installed with MA04-20 vise lacer or with MA01-75 roller lacer. The other sizes of SR series can be installed with just a hammer.

Options:

- Available in steel or stainless steel.
- Continuous lengths to fit any belt width. Can be manufactured in special sizes.

Packaging:

- Fasteners are shipped inside carton boxes as 5 sets/box. Connecting pins are included in the boxes.

Applications:

- Conveyor and transmission belts, as well as sanitary operations.
- Belts up to 9,5 mm thick and minimum pulley diameters up to 300 mm.

BELT LACING SELECTION CHART

Fastener No	Suitable Belt Thickness		Fastener Code	Length (cm)	Fastener Code	Length (cm)	Fastener Code	Length (cm)
	mm	inch						
1	1,5 – 2,5	1/16" - 3/32"	SR01	30	SR10G	100	SR14	80
7	2,5 - 3,2	3/32" – 1/8"	SR07	30	SR20G	100	SR18	80
15	3,2 – 4,5	1/8" – 11/64"	SR15	30	SR12	60	SR13	80
25	4,5 – 5,6	11/64" - 7/32"	SR25	30	SR23	60	SR24	80
27	5,6 – 7	7/32" - 9/32"	SR27	30	SR26	60	SR28	80
35	7 – 8	9/32" - 5/16"	SR35	30	SR36	60	SR38	80
45	8 – 9,5	5/16" - 3/8"	SR45	30	SR46	60	SR48	80

You can watch the installation video of this fastener from www.selflex.com

PLATE FASTENERS



Engineered to meet the demands of the toughest material-handling applications, Selfflex Plate Fasteners provide a strong, sift-free splice with superior holding ability. Their strength derives from a combination of top-and-bottom plate compression and high-tensile-strength bolts.

Features and Benefits:

- Specially formed teeth penetrate belt carcass, without damaging fibers.
- Quick and easy on-site installation thanks to templates and piloted bolts that provide automatic alignment.
- Patented BR12S and BR20S series Fixed Bolt Plate Fasteners have fixed bolts on the plate and do not fall down during installation.

Installation Options:

- Installation can be done easily with installation template, wrench, punch, bolt braker.
- In order to prevent the bolt fall down, Plate Fastener Klips can be used during installation.

Options:

- Available in a variety of metal types to best suit your application.
- A variety of portable hand and power tools to speed installation.

Packaging:

- The sizes between BR10E - BR20E and BR12S - BR20S are shipped as 250 pcs./box.
- The sizes between BR21E - BR40E are shipped 100 pcs./box.
- Plate fasteners are shipped as demounted in plastic bags and inside carton boxes.

Applications:

- Sand, gravel, crushed stone, cement, mines, salt and fertilizer factories.
- For belts from 5 – 30 mm (1/5" – 1.1/4") thick with max. mechanical fastener ratings 150 kN/m and minimum pulley diameters from 250 – 1500mm (10" – 59").

You can watch the installation video of this fastener from www.selfflex.com

PLATE FASTENER

BR10E	BR11E	BR12E	BR20E	BR21E	BR30E	BR40E
1"	1.1/4"	1.1/2"	2"	2.1/2"	3"	4"

FIXED BOLT PLATE FASTENERS

BR12S	BR20S
1.1/2"	2"

PLATE FASTENER SELECTION CHART

Fastener Code	Minimum Pulley Diameter		Suitable Belt Thickness		Tension Range
	inch	mm	inch	mm	kN/M
BR10E	10"	250	1/5" - 5/16"	5 - 8	40
BR11E	14"	350	9/32" - 3/8"	7 - 10	75
BR12E	18"	450	5/16" - 15/32"	8 - 12	75
BR12S	18"	450	5/16" - 15/32"	8 - 12	75
BR20E	30"	750	5/16" - 3/5"	8 - 15	75
BR20S	30"	750	5/16" - 3/5"	8 - 15	75
BR21E	40"	1050	15/32" - 50/16"	12 - 20	100
BR30E	47"	1200	3/5" - 1.1/4"	15 - 30	100
BR40E	59"	1500	3/5" - 1.1/4"	15 - 30	150

NUMBER OF PLATE FASTENERS WILL BE USED FOR DIFFERENT BELT WIDTHS

		Plate Fastener						
		BR10E	BR11E	BR12E	BR20E	BR21E	BR30E	BR40E
Belt Width	300 mm	10	8	8	-	-	-	-
	12 inch							
	400 mm	13	10	10	9	-	-	-
	16 inch							
	450 mm	15	12	12	10	9	-	-
	18 inch							
	500 mm	16	13	13	11	10	10	9
	20 inch							
	600 mm	20	16	16	14	13	13	10
	24 inch							
	650 mm	22	17	17	15	14	14	11
	26 inch							
	700 mm	23	18	18	16	15	15	12
	28 inch							
	750 mm	25	20	20	17	16	16	13
	30 inch							
	900 mm	30	24	24	21	19	19	16
	36 inch							
	1050 mm	35	28	28	24	22	21	19
	42 inch							
	1200 mm	40	30	30	28	26	24	21
	48 inch							
	1500 mm	50	32	32	35	32	30	27
	60 inch							
	1800 mm	60	48	48	42	39	36	32
	72 inch							

ELEVATOR BUCKETS

Features and Benefits:

- Plastic elevator buckets are manufactured from polypropylene and metal elevator buckets are produced from steel.
- Strong and long lasting.
- Flat washers are used with plastic elevator buckets and dome washer are used with metal elevator buckets.

Options:

- The distance between the bolt holes can be changed.
- There are different sizes as shown in the chart.
- Can be shipped with nylon nuts.

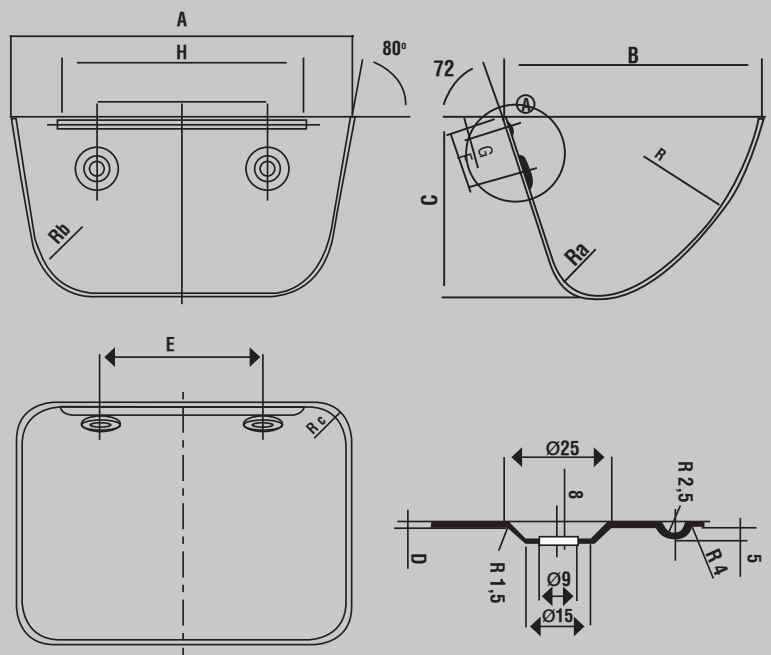
Packaging:

- Can be shipped with carton boxes or in sacks.

Applications:

- Elevator buckets are used over vertical elevators.

SIZES	
A	Width
B	Length
C	Depth
D	Thickness
E	Distance Between Bolt Holes
F	Number Of Holes
G	Size Of Bolts





PLASTIC ELEVATOR BUCKETS

Code	A (mm)	B (mm)	C (mm)	D (mm)	E (mm)	F	G Ø	Carrying Capacity Lt	Carrying Capacity Kg
KK-PK02	100	90	55	4	50	2	5/16	0.242	0.218
KK-PK03	120	105	65	4	60	2	5/16	0.382	0.344
KK-PK04	140	120	75	4	70	2	5/16	0.581	0.522
KK-PK05	160	130	85	5	80	2	5/16	0.775	0.698
KK-PK06	180	140	96	5	90	2	5/16	1.006	0.906
KK-PK07	200	150	107	5	100	2	5/16	1.588	1.432
KK-PK08	220	162	118	6	110	2	5/16	2.101	1.892
KK-PK09	240	175	130	6	120	2	5/16	2.505	2.252
KK-PK11	260	180	140	6	160	3	5/16	3.455	3.088
KK-PK12	280	213	170	7	180	3	3/8	4.221	3.651
KK-PK13	300	215	155	7	180	3	3/8	5.022	3.855
KK-PK14	320	220	150	7	200	3	3/8	6.251	4.474
KK-PK15	340	223	150	8.5	216	4	5/16	6.432	4.656
KK-PK19	400	225	152	9.5	260	5	5/16	7.796	5.545



METAL ELEVATOR BUCKETS

Code	A (mm)	B (mm)	C (mm)	D (mm)	E (mm)	F	G Ø	Carrying Capacity Lt	Carrying Capacity Kg
KK-SK01	90	80	45	1	40	2	5/16	0.144	0.132
KK-SK02	100	90	55	1	50	2	5/16	0.242	0.218
KK-SK03	120	105	65	1	60	2	5/16	0.382	0.344
KK-SK04	140	120	75	1	70	2	5/16	0.581	0.522
KK-SK05	160	130	85	1.2	80	2	5/16	0.775	0.698
KK-SK06	180	140	96	1.2	90	2	5/16	1.006	0.906
KK-SK07	200	150	107	1.5	100	2	5/16	1.588	1.432
KK-SK08	220	162	118	1.5	110	2	5/16	2.101	1.892
KK-SK09	240	175	130	1.5	120	2	5/16	2.505	2.252
KK-SK11	260	180	140	1.5	160	3	3/8	3.455	3.088
KK-SK12	280	213	170	1.5	180	3	3/8	4.221	3.651
KK-SK13	320	220	150	1.5	200	3	3/8	6.251	4.474

ELEVATOR BUCKET FASTENERS



Code: KK 06 - KK 08 - KK 10 - KK 10B - KK12



Code: KK 16 - KK 18 - KK 38 - KK 39

By their special design they fastens the elevator buckets to the elevators strongly.

Features and Benefits:

- Steel elevator bucket fasteners are manufactured in DIN 15237 standards.
- Strong and long lasting.
- Silver or gold color plated.

Options:

- Can be shipped with nylon nut and with flat or bowl washer.
- Various bolt sizes available.

Packaging:

- Shipped in carton boxes. Packaging as follows; KK06, KK08, KK16 and KK18 500 pcs/box, the other elevator buckets are shipped as 200 pcs/box.
- Elevator bucket fasteners are shipped as demounted in plastic bags.

Applications:

- Used in vertical elevators to fasten the buckets to the elevators.

ELEVATOR BUCKET FASTENERS SELECTION CHART

Fastener Code	Bolt Sizes	Head Diameter
KK06 (DIN 15237)	M6 x 30 – 40 mm	18,5 Ø
KK08 (DIN 15237)	M8 x 30 – 40 – 50 mm	30 Ø
KK10 (DIN 15237)	M10 x 40 – 50 mm	30 Ø
KK10B (DIN 15237)	M10 x 40 – 50 mm	34 Ø
KK16	M8 x 30 – 40 – 50 mm	28 Ø
KK18 (With Nylon Nut)	M8 x 30 – 40 – 50 mm	28 Ø
KK38	3/8" x 40 – 50 mm	32 Ø
KK39 (With Nylon Nut)	M10 x 40 – 50 mm	32 Ø
KK12 (DIN 15237)	M12 x 40 – 50 – 60 mm	34 Ø

ELEVATOR BUCKET OVAL BELT FASTENERS



Features and Benefits:

- Long lasting and durable to corrosion.
- Gold color plated.

Options:

- Various bolt sizes available.

Packaging:

- Shipped in carton boxes. Packaging as follows; JR38 200 pcs/box, JR16 300 pcs/box, JR14 500 pcs/box.
- Elevator oval belt fasteners are shipped as demounted in plastic bags.

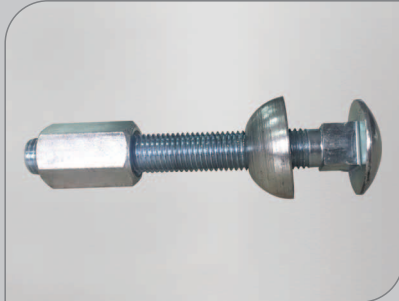
Applications:

- Used in vertical elevators to fasten the buckets to the elevators.

FASTENER CODES AND SIZES

Fastener Code	Bolt Sizes	Bolt Length
JR14	1/4"	30 - 40 mm
JR16	M8	30 - 40 - 50 mm
JR38	3/8"	40 - 50 mm

SCREEN HOOKS AND BOLTS



These are the so called U BOLTS and J BOLTS.

Options:

- Available in various lengths and diameters.

Packaging:

- Packaged with carton boxes. EK01 and EK02 are shipped as 300 pcs/box, the others are shipped as 200 pcs/box.

Applications:

- U BOLT'are used at mines; sand, gravel and coal querries and kind of crushing and screening plant to fix the sieve to the body of the screen.
- J BOLT's are used to stretch the sieves over the screen.

U BOLT SIZES

Codes	EK01	EK02	EK05	EK06	EK09	EK10
Sizes	M5Ux200	M5Ux250	M8Ux200	M8Ux250	M10Ux200	M10Ux250

J BOLT SIZES

Codes	EK13	EK14	EK15
Sizes	M8Jx180	M10Jx180	M12Jx180

SCREEN STRETCHING BOLT

Codes	EK26
Sizes	M16-130

SPARE PARTS

Bolts and Nuts



Code: YPC5
8x51 bolt for
BR11E-BR12E-BR20E



Code: YPC3
8x30 bolt for KK16-KK18-
JR16-BR10E



Code: YPRS1-M8
M8 standart nut for
KK16



Code: YPRS2
M8 conic nut for
BR10E-BR11E-BR12E-BR20E

Plate Fastener Plates



Code: YPRC12
BR20E Top Washer



Code: YPRC13
BR20E Bottom Washer



Code: YPRC14
BR12E Top Washer



Code: YPRC15
BR12E Bottom Washer

Connection Pins



Code: YPT2
2.6 mm diameter. Ready
as galvanised and
stainless for MR01



Code: YPT3
3.4 mm diameter. Ready as
galvanised and stainless for MR02



**Code: YPMT50-YPMT60-
YPMT80-YPMT100-YPMT120**
8 mm diameter. Ready in sizes
50-60-80-100-120 cm



Code: YPST
Ready as galvanised and
stainless for belt lacing

Washers



Code: YPRC2 - YPRC5
Dome washer for
M8 and M10 bolts



Code: YPRC9 - YPRC10
Flat washer for
M8 and M10 bolts

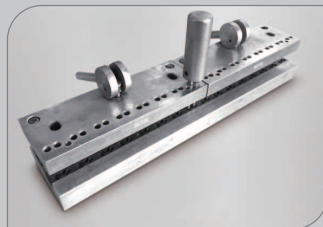
BELT FASTENER INSTALLATION TOOLS



Code: MA02-10
MR01 - MR02
installation tool 10cm



Code: MA02-20
MR01 - MR02
installation tool 20cm



Code: MA02-40
MR01 - MR02
installation tool 40cm



Code: MA02-100
MR01 - MR02
installation tool 100cm



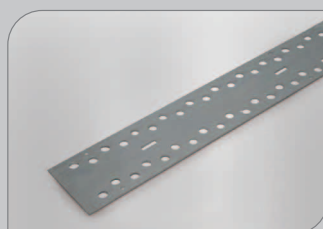
Code: MA03-15
MR03 installation tool
15cm



Code: MA08-40
MR05 nail rivet
installation tool 40cm



Code: MA08-T
MR05 tool for bolt
screwing



Code: MA07
BR series. 1.1/2" and
2" installation template



Code: MA05&MA06-10
MA06-10: 1"-2"
MA05: 2.1/2"-3"
plate fastener wrench



Code: MA05-M&MA06-M
MA06-M: 1"-2"
MA05-M: 2.1/2"-3" plate
fastener power wrench



Code: MA10
Plate fastener
bolt braker



Code: KL12-20-21
KL12: 1.1/4"-1.1/2"
KL20: 2"
KL21: 2.1/2"- 3" plate
fastener clips



Code: MA09-8
1"-2" M8 punch



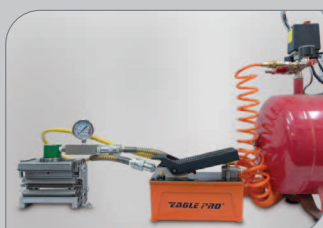
Code: MA09-10
2.1/2"-3" M10 punch



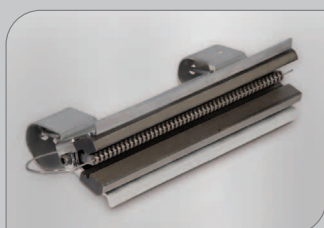
Code: MA09-8L
1"- 2" M8 power punch



Code: MA09-10L
2.1/2"-3" M10 power punch



Code: MA11
SR No:1&7 and TR series
installation tool with compressor



Code: MA04-20
Vice Lacer installation tool
20cm for SR No:1-7
and TR series



Code: MA01-75
Roller Lacer installation tool
75cm for SR No:1-7 and
TR series



Code: MA11
Wire cutter for connecting pins
of MR01, MR02, MR03

FASTENER CODES				INSTALLATION TOOL FOR THE FASTENER											
MR01				MA02-10		MA02-20		MA02-40		MA02-100		MA11			
MR02				MA02-10		MA02-20		MA02-40		MA02-100		MA11			
MR03				MA03-15				MA11							
MR05				MA08-40				MA08-T							
BR10E				MA06-10		MA06-15		MA06-M		MA10		MA09-8		MA09-8L	
BR11E				MA06-10	MA06-15		MA06-M		MA10	KL12	MA09-8		MA09-8L		
BR12E				MA06-10	MA06-M		MA10		KL12	MA07	MA09-8		MA09-8L		
BR20E				MA06-10	MA06-M		MA10		KL20	MA07	MA09-8		MA09-8L		
BR21E				MA05		MA05-M		MA10		KL21		MA09-10		MA09-10L	
BR30E				MA05		MA05-M		MA10		KL21		MA09-10		MA09-10L	
BR40E				MA06-10		MA06-M		MA10			MA09-8		MA09-8L		
TR00x05		TR00x10		MA04-20						MA01-75					
TR01-Y		TR01-YU													
TR01-DU		TR02-Y													
TR03-Y		TR04-Y													
TR05-Y		TR06-Y													
SR01	SR07		SR10G	MA04-20						MA01-75					
SR10P	SR20G		SR20P												

KIVILCIM is established as the first Turkish manufacturer at its sector in 1949, and since then leading conveyor belt fasteners sector in Turkey.

Our brand, besides over 500 respected customers in Turkey and with export over 25 countries, is on the way of being a world brand of its sector. With the proud of this success, with responsibility, our company is going on manufacturing with latest technology at our modern factory always putting quality and trust at the first place. Thanks to our research and development investments to meet customer needs our product range is expanding gradually. **SELFLEX** is the registered trade mark of **KIVILCIM**.

Our product range includes belt fasteners such as hinged fasteners, hinged and stapled fasteners, wire hooks, plate fasteners and belt lacings; elevator metal and plastic buckets, elevator bucket fasteners, elevator bucket oval belt fasteners; screen hooks and bolts; steel toe caps for safety shoes and steel shanks.

KIVILCIM Mark is registered by Turkish Patent Institute on 28/02/1957.



www.kivilcim-metal.com



www.selflex.com

Nisanci Mah. Otakcilar Cad. No:39 Eyup / Istanbul - TURKEY
Tel: 0 212 576 76 80 - 0 212 612 63 07 • Fax: 0 212 544 03 67 • kivilcim@kivilcim-metal.com